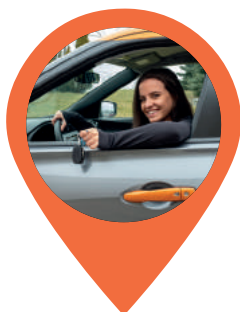


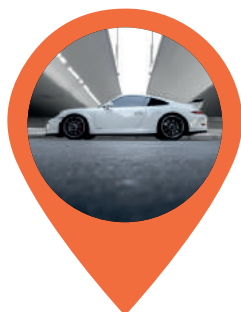
WhereSafe

Protect Your Passions

**Real-time
GPS tracking
& security
for today's
active family**



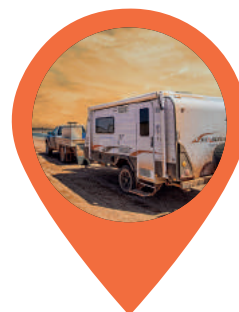
Family



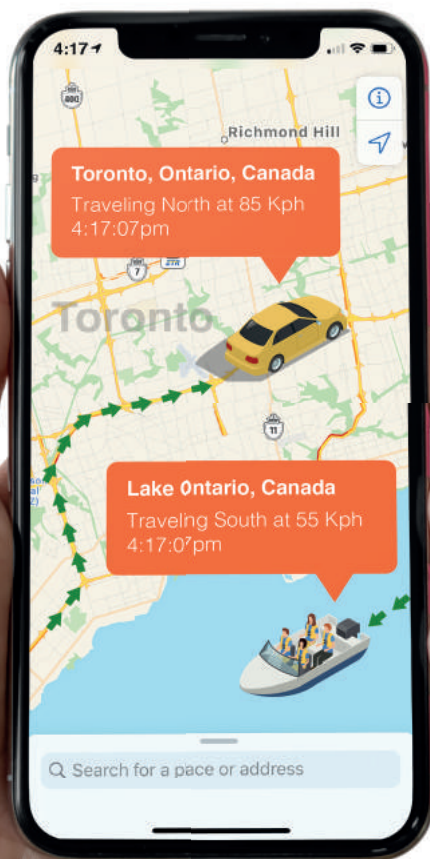
**Vehicles &
Equipment**



Power Toys



RVs & Trailers



Monthly

\$12.95
per month

Yearly

\$120.00
per year

SAVE

All Plans Include:

- ✓ 2-Minute Live Updates
- ✓ North American Coverage
- ✓ 24/7 Customer Support
- ✓ Automated Push/Email Notifications

Get Notified IF:



SafetyNet

If the vehicle **leaves** your designated safe zone



RideMonitor

If the vehicle shows dangerous or erratic driving behaviours



TamperGuard

Should anyone tamper with the device or vehicle



NightWatch

If the vehicle **moves** during your designated safe hours



BAT Mini Portable Tracker



Sport Tracker In-Vehicle



BAT Portable



OBD Plug-and-Play



NOW AVAILABLE!



**BUY NOW AT
FASTEK.CA!**

BARRIE
705-726-5333
barrie@fastek.ca

ST. CATHARINES
905-685-6245
info@fastek.ca

HAMILTON
905-387-2977
hamilton@fastek.ca

WhereSafe GPS · Common Questions

❖ HOW MUCH DO THE GPS UNITS COST?

Each unit has a hardware fee and a monthly tracking fee, much like a mobile phone. Most competitors charge around \$25 per month, while WhereSafe is \$12.95/month with a discount for customers who pay a year at a time.

❖ DO I HAVE TO PAY THE MONTHLY TRACKING FEE?

In order to track your unit, you do have to pay the monthly tracking fee. Units that do not have an active tracking account cannot be tracked.

❖ DOES EACH UNIT NEED ITS OWN ACCOUNT?

You can have one account with more than one unit, but each unit requires its own monthly plan to function. However, there are no contracts so you can cancel any time.

❖ CAN I USE THIS TO TRACK MY NEIGHBOUR / EX / BUSINESS COMPETITOR?

Using these units to track someone without their knowledge or to track someone else's property is against the law and will result in criminal charges. You can use GPS units to track your own property only.

❖ WHAT KIND OF TRACKING COVERAGE DO THESE UNITS PROVIDE?

WhereSafe GPS units can track your property anywhere within North America. The units communicate with a satellite rather than a cell tower, which offers a far more dependable and consistent tracking solution than other services.

❖ HOW DOES THE APP SEND ALERTS?

You can choose how you're alerted by your unit, whether via SMS, or email. In order to make sure you're alerted in the event of a theft, make sure that your phone is set to permit WhereSafe notifications during Do Not Disturb and/or Silent Mode[s].

❖ WHAT DOES REAL-TIME TRACKING MEAN?

If your property is moving, you will see updates every 2 minutes. You can upgrade your monthly tracking plan to decrease the time between updates, if you prefer. If your property is not moving, your unit will 'sleep' to conserve battery power and only update every 8 hours. As soon as it begins moving again, it will 'wake up' and begin updating every 2 minutes.

❖ HOW LONG DOES THE BATTERY LAST ON A MAGNETIC UNIT?

If your vehicle is moved infrequently, the battery can last anywhere from 2 to 6 months. The more the vehicle is moved, the more the unit has to communicate with the satellite, and the shorter the time will be between charges.

❖ WHAT IS SAFETYNET?

SafetyNet creates a virtual 'fence' around an area such as a parking lot, job site, home, or community. When your property leaves that designated safety zone, you will be alerted.

❖ WHAT IS TAMPERGUARD?

TamperGuard will alert you if anyone tampers with your device or vehicle.

❖ WHAT IS RIDEMONITOR?

RideMonitor will send you an alert if your vehicle is driving erratically or in a dangerous way.

❖ WHAT IS NIGHTWATCH?

NightWatch will alert you if your vehicle moves during designated 'safe hours', which you set through the provided app.

❖ IS THE APP FREE?

Yes, the app is free for both Android and iOS mobile phones, but you will need a monthly tracking plan from WhereSafe to track each unit on your account.

